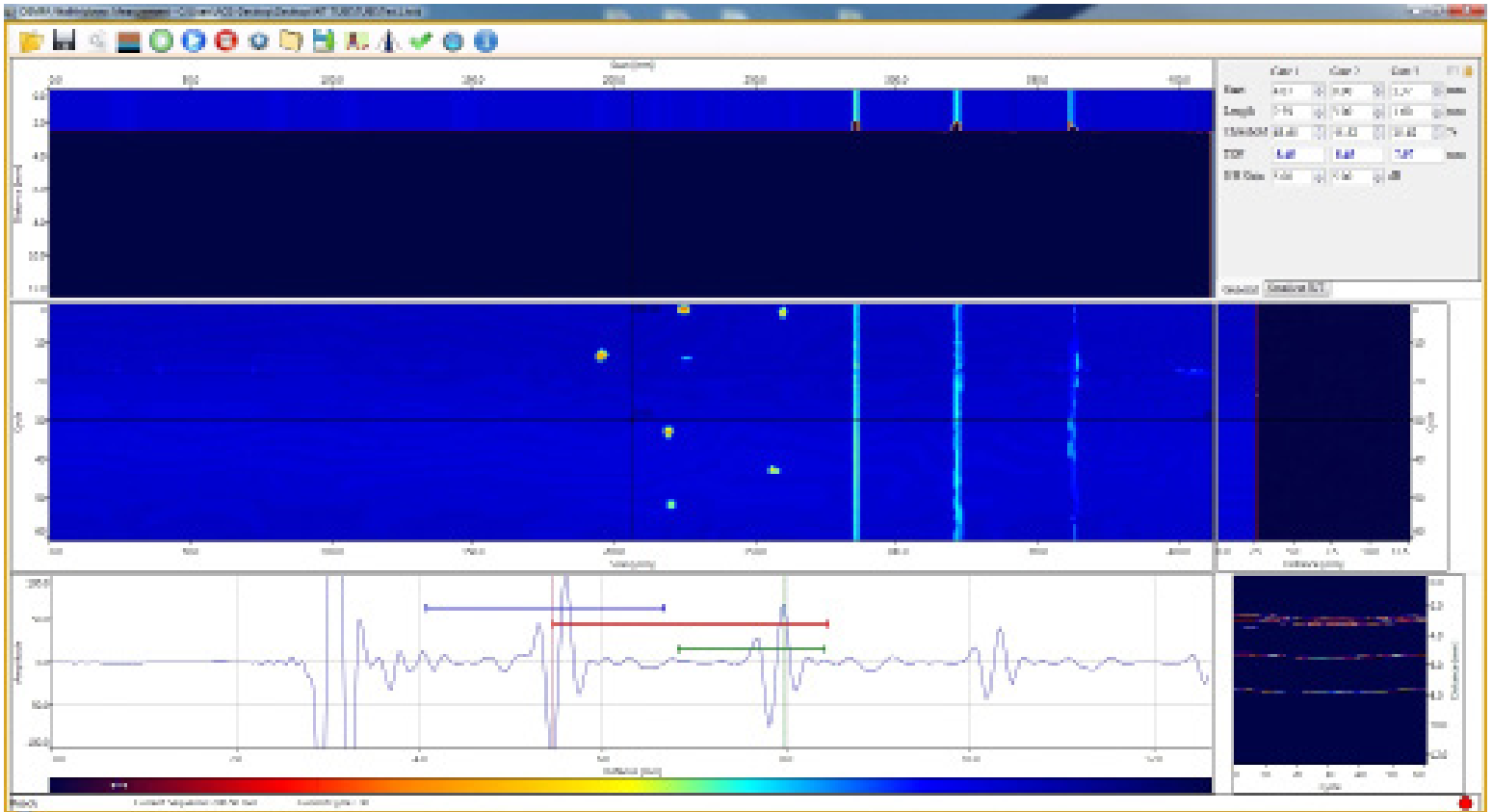




Concerto Software

Phased Array Corrosion Mapping



Concerto is a UT Acquisition and Analysis software specially designed for Phased Array corrosion mapping. For the tough field conditions that operators deal with Concerto features no menu, less than 18 icons, and few controls so that operators can easily work and not be bothered by complex GUIs. Concerto is simple and easy to work with yet WT, Surface, and back wall C-scan can still be analyzed and settings can be changed using the same acquired data.

Features:

- Extremely Fast
- Very Easy to Use
- Provides Minimum WT in a Section
- WT and ID or OD Cscan